



FIRE PROTECTION PRODUCTS



FIRE PROTECTION PRODUCTS

ANGULAR EXPANSION JOINTS ► GIMBAL TYPE SEISMIC EXPANSION JOINTS



Bellow Material
Nominal Diameter
Operating Pressure
Operating Temperature
Connection Types
Flange Material
Intermediate Pipe

Stainless Steel AISI 321 (Opt. 304, 316L, 316TI, 309)
DN15 (1/2") - DN400 (160")
175 psi
-80°C/+600°C
Fixed Flanged, Welded Ended, Grooved
Carbon Steel St. 37.2 as standard*
Carbon Steel St. 37.2 as standard*



BRAIDED LOOP JOINTS ► FIRE PROTECTION EXPANSION JOINTS



Bellow Material
Braiding Material
Nominal Diameter
Operating Pressure
Operating Temperature
Connection Types
Fittings Materials
Elbow and Turn Material
Connection Material

Stainless Steel AISI 316L / AISI 321
Stainless Steel AISI 304
DN15 (1/2") - DN300 (12")
175 / 250 psi
-80°C/+600°C
Flange, Welded ends, Grooved
Carbon Steel St. 37.2*
Carbon Steel St. 37.2*
Carbon Steel St. 37.2*



FIRE PROTECTION HOSES ► SPRINKLER CONNECTION HOSES



FM, VdS Approved, UL Type

Hose Type
Hose Material
Braiding Material
Fittings Types
Fittings Materials
Min. Bending Radius

Standard corrugated metal hose
Stainless Steel AISI 316L
Stainless Steel AISI 304
Male-Internal threaded pipe
Carbon Steel St. 37.2/Stainless Steel
200mm



Conn. Size	Hose Dia.
1" x 1/2" - 3/4"	DN20
1" - 1/2"	DN25

FIRE PROTECTION VALVES ► NRS GATE VALVE (DIN EN 1171)



Body
Stem
Disc
O-Ring
Connection
Flange
Grooved Ends
Max. Operating Temp.
Max. Operating Pressure
Coating

EN-GJS-450-10
SS 420
EN-GJS-450-10 + EPDM
NBR (EPDM Optional)
Flange-Flange, Flange-Grooved, Grooved-Grooved
DIN EN 1092-2:1997
ISO 6182
80 °C
PN 10/16
Fusion Bonded Epoxy coating in accordance with ANSI/AWWA C550

Sizes

DN 40 (1 1/2") - DN 400 (16")



FIRE PROTECTION VALVES ► OS&Y GATE VALVE (DIN EN 1171)



Body
Stem
Disc
O-Ring
Connection
Flange
Grooved Ends
Max. Operating Temp.
Max. Operating Pressure
Coating
Sizing

EN-GJS-450-10
SS 420
EN-GJS-450-10 + EPDM
NBR (EPDM Optional)
Flange-Flange, Flange-Grooved, Grooved-Grooved
DIN EN 1092-2:1997
ISO 6182
80 °C
PN 10/16
Fusion Bonded Epoxy coating in accordance with ANSI/AWWA C550



FIRE PROTECTION VALVES ► Y-TYPE STRAINER



Body
Screen
Gasket
Bonnet
Connection
Max. Operating Temp.

Max. Operating Pressure
Coating
Sizes

EN-GJS-450-10
SS 304 Perforated, (Perforated double screen in SS 304 and SS 316 available)
EPDM, (Graphite + Acanthopore plate available)
EN-GJS-450-10
Flanged, DIN EN 1092-2:1997
80 °C (Rubber Gasket)
350 °C (Graphite gasket)
PN 10/16
Fusion Bonded Epoxy coating in accordance with ANSI/AWWA C550
DN 40 (1½") - DN 400 (16")



FIRE PROTECTION VALVES ► SWING CHECK VALVE DIN EN 12334



Body
Disc
Washer
Seat Ring
Connection
Max. Operating Temp.

Max. Operating Pressure
Coating
Sizes

EN-GJS-450-10
EN-GJS-450-10 + EPDM
SS 420
Brass Hpb 59-1 Pressed fit, (Pressed fit or threaded SS 304 or 316 available)
Flanged, DIN EN 1092-2:1997
80 °C (Rubber Gasket)
350 °C (Graphite gasket)
PN 10/16
Fusion Bonded Epoxy coating in accordance with ANSI/AWWA C550
DN 40 (1½") - DN 400 (16")



FIRE PROTECTION VALVES ► BRONZE BUTTERFLY VALVES



Body
Disc
Upper and Lower Stem
O-Rings (All)
Connection
Max. Operating Temp.
Max. Operating Pressure
Sizes

ASTM B-505 or SUS 304
ASTM B-584 EPDM Encapsulated
ASTM A-564 Type XM 12
EPDM Grade E
Threaded, BT
120 °C
175 Psi
DN 25 (1") - DN 65 (2½")



FIRE PROTECTION VALVES ► GROOVED BUTTERFLY VALVES



Body
Disc
Upper and Lower Stem
Worm Gear Shaft
Connection
Max. Operating Temp.
Max. Operating Pressure
Sizes

ASTM A-536 Nylon-11 or Epoxy coated
ASTM A-536 EPDM Encapsulated
SS, AISI 420
SS, AISI 410
HPG Grooved End
120 °C
300 Psi
DN 65 (2½") - DN 300 (12")



FIRE PROTECTION VALVES ► WAFER TYPE BUTTERFLY VALVES



Body
Disc
Upper and Lower Stem
Worm Gear Shaft
Connection
Max. Operating Temp.
Max. Operating Pressure
Sizes

ASTM A-536 Nylon-11 or Epoxy coated with EPDM Gasket
ASTM A-536 EPDM Encapsulated
SS, AISI 420
SS, AISI 410
Wafer
120 °C
300 Psi
DN 65 (2½") - DN 200 (8")



FIRE PROTECTION VALVES ► GROOVED CHECK VALVES



Body
Clapper

Seat Ring
Spring
Connection
Max. Operating Temp.
Max. Operating Pressure
Sizes

Ductile Iron conforming to ASTM A536, Epoxy coated
2"-5" Type 304 or 302 Stainless Steel acc to ASTM A167
6"-8" Ductile Iron conforming to ASTM A536 Grade 65-45-12
SS, AISI 304
Type 302 stainless steel to ASTM A 269
Grooved End
120 °C
300 Psi
DN 50 (2") - DN 200 (8")



FIRE PROTECTION PRODUCTS

FIRE PROTECTION VALVES ► WET ALARM VALVE & SYSTEM



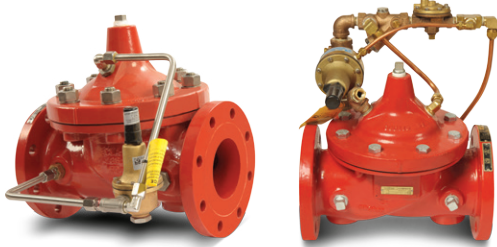
Body (Wet alarm Valve)
Seat (Wet alarm Valve)
Clapper Bush (Wet alarm Valve)
Connection
Max. Operating Pressure
Sizes

Ductile Iron
Bronze
Brass
Flange-Flange, Flange-Grooved, Grooved-Grooved
250 Psi
DN 80 (3") - DN 200 (8")

System Components

Wet Alarm valve
Pressure Switch
Retarding Chamber
Trim Set
Sprinkler Alarm

FIRE PROTECTION VALVES ► CLA-VAL PRESSURE RELIEF & REDUCING VALVE



Main valve body & cover
Main valve internal trim
Pilot control system
Adjustment pressure range

Ductile Iron ASTM A-536
Bronze ASTM B61
Bronze ASTM B62 with 303 Stainless Steel trim
150 class - 30-165 psi
300 class - 30-165 psi
Water, to +180°F max.
Globe: 3" - 8"
Angle: 3" - 8"
150 and 300 ANSI B16.42

Temperature Range
Sizes

Flange

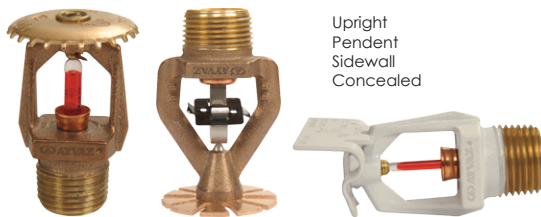
FIRE PROTECTION VALVES ► TEST DRAIN VALVE



Body
Ball
Seat
Connection
Max. Operating Pressure
Sizes

Forged Brass
Chrome Plated
Teflon
NPT Threaded, Female
300 Psi
1"-1 1/4"-1 1/2"-2"

FIRE PROTECTION EQUIPMENT ► SPRINKLERS



Upright
Pendent
Sidewall
Concealed

Connection Dia
Installation Pos.
K-Factor
Temperature
Surface

1/2", 3/4", 1" npt
Pendent, Upright, Sidewall
40, 80, 115, 160, 200, 242, 320, 363
57 °C, 68 °C, 74 °C, 96 °C ... 260 °C
Brass, White, Chrome

FIRE PROTECTION EQUIPMENT ► SYSTEM SENSOR FLOW SWITCH



Sizes
Pressure Rating
Accessories
Minimum Flow Rate for Alarm
Maximum Surge
Contact Ratings

Steel Pipe schedules 10 to 40, sizes 1" to 8"
BS 1387 pipe 50mm thru 200mm
Up to 450 PSI (31 bar)
A Conventional Trim Trim package for use with the Model F-1 Deluge Valve.
10 GPM (38 LPM)
18 FPS (5.5 m/s)
10.0 Amps at 125/250VAC
2.5 Amps at 6/12/24VDC Resistive
Two knockouts provided for 1/2" conduit

Conduit Entrances

FIRE PROTECTION EQUIPMENT ► 100 TONG GROOVED PIPING PRODUCTS

Body
Gasket
Bolt and Nuts
Temperature Range

GGG 40.3 Ductile Iron
EPDM (Standard)
Galvanized Carbon Steel
-50/+150 °C



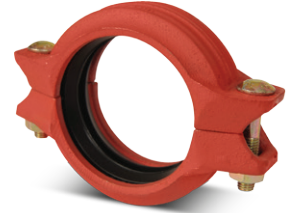
EQUAL T



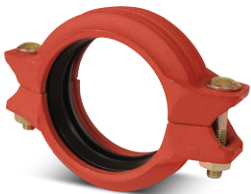
CONCENTRIC REDUCERS



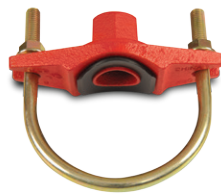
RIGID COUPLINGS



FLEXIBLE COUPLINGS



U-BOLTS



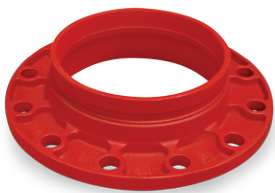
GROOVED FLANGES



REDUCING COUPLINGS



FLANGE ADAPTERS



ELBOWS



GROOVED MECHANICAL T



THEADED MECHANICAL T



Gasket Material	Temperature	Application Areas
EPDM	-34 °C +150 °C	Cold and hot water, non-oil gas, diluted acid, alkaline salt
Silicon	-40 °C +177 °C	Drinking water, hot water, high-temperature air and some high-temperature chemicals
Nitrile	-29 °C +82 °C	Oil, oil-gas, mineral oil, vegetable oil, hot water, water with temperature of not than 65°C are forbidden

FIRE PROTECTION EQUIPMENT ► FIRE HYDRANTS



Body & Elbow
Stem
Gasket
Size
Pressure Class

Cast Iron GG-25
Stainless Steel
EPDM
DN 100
PN 16

FIRE HOSE VALVES



Body
Size
Accessories

Brass
2 1/2" NPT. threaded
Storz Coupling (1)

STORZ COUPLINGS



FIRE PROTECTION PRODUCTS



HEAD OFFICE - FACTORY

Atatürk Sanayi Bölgesi Hadımköy Mahallesi Mustafa İnan Caddesi No: 44 Arnavutköy - İSTANBUL
Tel: +90 212 771 01 45 (pbx) | Fax: +90 212 771 25 60

Caserta/Italy

Tel: +39 0823 187 3988
rmolaro@ayvaz.com

Moscow/Russia

Tel: +74959951728

ayvazrus@ayvaz.com

Viernheim/Germany

Tel: +49 62046014399

germany@ayvaz.com

Kiev/Ukraine

Tel: +380 44 390 57 57

info@ayvaz.com.ua

Warsaw/Poland

Tel: +48-32-783-295-1

tricorr@tricorr.eu

Dubai/U.A.E

Tel: +971 563550822
+971 501306871

mideast@ayvaz.com

Xiamen/China

Tel: +86 592-7018050

shanghai@ayvazchina.com

xiamen@ayvazchina.com

Kazakhstan

Tel: +7 (701) 066 066 1

+90 (533) 760 34 66

celyas@ayvaz.com

Isperih/Bulgaria

Tel: +359 8431 27 32

office@ayvaz-n.eu