

 **AYVAZ**

# VALVES



info@ayvaz.com | www.ayvaz.com

5

GLOBE VALVES ► **GV-16, GV-25, GV-40**



Body	<b>GV-16</b> GG-25 Cast Iron	<b>GV-25</b> GSC-25 Cast Steel	<b>GV-40</b> GSC-25 Cast Steel
Seat	Stainless Steel AISI 304	Stainless Steel AISI 304	Stainless Steel AISI 304
Disc	Stainless Steel	Stainless Steel	Stainless Steel
Connection	Flanged	Flanged	Flanged

-FLANGED: DN15 all sizes are available in between DN400

NON-RISING STEM, SOFT SEATED GATE VALVE ► **GTK-16**



Body	Ductile Iron GGG 40.3
Disc	Rubber Coated Cast Iron
Gasket	NBR/EPDM
Connection	Flanged
Max. Operating Temp.	110°C
Max Operating Pressure	16 bar/10 bar/6 bar/2,5 bar

-FLANGED: DN40 all sizes are available in between DN1200

DISMANTLING JOINT



Body Material	Cast Iron GG-25 / Ductile Iron GGG 40 & GGG 50
Nominal Diameter	DN100 (4") - DN2200 (88")
Operating Pressure	16 bar
Operating Temperature	-80°C/+600°C
Connection Types	Fixed Flanged
Bolts and Nuts	Stainless Steel x Cr13

WAFER TYPE DISCO CHECK VALVES ► **CV-10**



Body Material	<b>CV-10P</b> Brass Ms58	<b>CV-10S1</b> Stainless Steel AISI 304	<b>CV-10S2</b> Stainless Steel AISI 316
Disc Material	Stainless Steel AISI 316	Stainless Steel AISI 316	Stainless Steel AISI 316
Centering Hoop	Stainless Steel AISI 302	Stainless Steel AISI 302	Stainless Steel AISI 302
Spring Material	Stainless Steel AISI 302	Stainless Steel AISI 302	Stainless Steel AISI 302
Connection Type	Wafer Type	Wafer Type	Wafer Type
Nominal Pressure (PN)	16 bar	40 bar	40 bar
Min. Allowable Temp.	-10°C	-10°C	-10°C
Max. Operating Temp.	250°C	300°C	300°C

-DN15 all sizes are available in between DN100

WAFER TYPE DISCO CHECK VALVES ► **CV-11**



Body Material	<b>CV-11</b> Cast Iron GG25	<b>CV-11S1</b> Stainless Steel AISI 304	<b>CV-11S2</b> Stainless Steel AISI 316
Disc Material	Cast Iron GG25	Stainless Steel AISI 304	Stainless Steel AISI 316
Centering Part	Stainless Steel AISI 316	Stainless Steel AISI 304	Stainless Steel AISI 316
Spring Material	Stainless Steel AISI 302	Stainless Steel AISI 302	Stainless Steel AISI 316
O-ring	EPDM	-	-
Connection Type	Wafer Type	Wafer Type	Wafer Type
Nominal Pressure (PN)	16 bar	40 bar	40 bar
Min. Allowable Temp.	-10°C	-10°C	-10°C
Max. Operating Temperature	100°C	300°C	300°C

-DN125 all sizes are available in between DN200

DOUBLE PLATE CHECK VALVES ► **CV-20/25**



Body Material	<b>CV-20</b> Cast Iron GG25	<b>CV-25</b> Cast Iron GG25
Disc Material	Stainless Steel AISI 316	Ductile Iron GGG 40.3
Resilient Seat	EPDM	EPDM
Spring Material	Stainless Steel AISI 304	Stainless Steel AISI 304
Disc Bearing	Teflon	Teflon
Connection Type	Wafer Type	Wafer Type
Nominal Pressure (PN)	10/16 bar	10/16 bar
Min. Allowable Temp.	-10°C	-10°C
Max. Operating Temperature	110°C	110°C

-FLANGED: DN50 all sizes are available in between DN300 for PN16  
-FLANGED: DN350 all sizes are available in between DN600 for PN10

## WAFER TYPE SWING CHECK VALVES ► CV-33/35



Body Material  
Disc Material  
Disc Bearing  
Eye Bolt  
O-ring  
Connection Type  
Nominal Pressure (PN)  
Min. Allowable Temp  
Max. Operating Temperature

**CV-33**  
Stainless Steel AISI 316  
Stainless Steel AISI 316  
Ni Coated Carbon Steel  
Stainless Steel AISI 316  
EPDM  
Flanged  
16 bar  
-10°C  
110°C

**CV-35**  
Ni Coated Carbon Steel  
Ni Coated Carbon Steel  
Ni Coated Carbon Steel  
Ni Coated Carbon Steel  
EPDM  
Flanged  
16 bar  
-10°C  
110°C

-FLANGED: DN32 all sizes are available in between DN300

## LIFT TYPE CHECK VALVES ► CLV-50



Body Material  
Cover  
Disc Material  
Spring Material  
Gasket  
Connection Type  
Nominal Pressure (PN)  
Max. Operating Temperature

GG-25 Cast Iron  
GG-25 Cast Iron  
Stainless Steel AISI 304  
Stainless Steel AISI 304  
CrNi laminated pure graphite  
Flanged  
16 bar 9,6 bar  
100°C 300°C

-FLANGED: DN15 all sizes are available in between DN300

## SWING TYPE CHECK VALVES ► SC-200



Body Material  
Disc Material  
Pipe Plug  
Picking Material  
Connection Type  
Nominal Pressure (PN)  
Max. Operating Temperature

Stainless Steel AISI 304  
Stainless Steel AISI 304  
Stainless Steel AISI 304  
PTFE  
Threaded  
16 bar  
180°C

Stainless Steel AISI 316  
Stainless Steel AISI 316  
Stainless Steel AISI 316  
PTFE  
Threaded  
16 bar  
180°C

-THREADED: 1/2" all sizes available in between 2"

## SWING TYPE CHECK VALVES ► SC-400

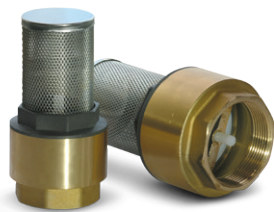


Body Material  
Bonnet  
Spring  
Washer  
Connection Type  
Nominal Pressure (PN)  
Max. Operating Temperature

Brass Ms58  
Brass Ms58  
Stainless Steel  
ABS/NBR  
Threaded  
16 bar  
110°C

-THREADED: 1/2" all sizes available in between 2"

## FOOT VALVE



Body Material  
Seat  
Disc Holder  
Spring  
Disc  
Filter  
Connection Type  
Nominal Pressure (PN)  
Max. Oper. Temp.

Brass-CW617N UNI EN 12165  
Brass-CW617N UNI EN 12165  
Hostaform Pom-DIN5735  
Stainless Steel-UNI 10270-1  
Nylon+NBR  
Filter Stainless Steel  
Threaded  
16 bar  
110°C

-THREADED: 1/2" all sizes available in between 2"

## STAINLESS STEEL BALL VALVES ► V-2T



Body Material  
Ball Material  
Body Gasket  
Ball Seat  
Connection Type  
Nominal Pressure (PN)  
Max. Operating Temperature

Stainless Steel AISI 304  
Stainless Steel AISI 304  
PTFE  
R-PTFE (15%)  
Threaded  
63 bar  
-25/+180°C

Stainless Steel AISI 316  
Stainless Steel AISI 316  
PTFE  
R-PTFE (15%)  
Threaded  
63 bar  
-25/+180°C

-THREADED: 1/2" all sizes available in between 4"

# VALVES

## STAINLESS STEEL BALL VALVES ► V-3T



Body Material	Stainless Steel AISI 304	Stainless Steel AISI 316
Ball Material	Stainless Steel AISI 304	Stainless Steel AISI 316
Body Gasket	PTFE	PTFE
Ball Seat	R-PTFE (15%)	R-PTFE (15%)
Connection Type	Threaded	Threaded
Nominal Pressure (PN)	40 bar	40 bar
Max. Operating Temperature	-25/+180°C	-25/+180°C

**-THREADED: 1/4" all sizes available in between 4"**

## STAINLESS STEEL BALL VALVES ► V-3F



Body Material	Stainless Steel AISI 304	Stainless Steel AISI 316
Ball Material	Stainless Steel AISI 304	Stainless Steel AISI 316
Body Gasket	PTFE	PTFE
Ball Seat	R-PTFE (15%)	R-PTFE (15%)
Connection Type	Flanged	Flanged
Nominal Pressure (PN)	40 bar	40 bar
Max. Operating Temperature	-25/+180°C	-25/+180°C

**-FLANGED: DN15 all sizes available in between DN100**

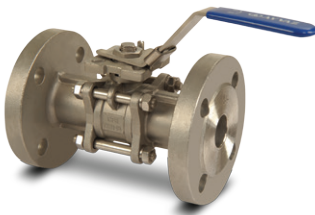
## BALL VALVE WITH MOUNTING PAD ► V-3TP



Body Material	Stainless Steel AISI 304	Stainless Steel AISI 316
Ball Material	Stainless Steel AISI 304	Stainless Steel AISI 316
Body Gasket	PTFE	PTFE
Ball Seat	R-PTFE (15%)	R-PTFE (15%)
Connection Type	Threaded	Threaded
Nominal Pressure (PN)	40 bar	40 bar
Max. Operating Temperature	-25/+180°C	-25/+180°C

**- THREADED: 1/2" all sizes available in between 4"**

## BALL VALVES WITH MOUNTING PAD ► V-3FP



Body Material	Stainless Steel AISI 304	Stainless Steel AISI 316
Ball Material	Stainless Steel AISI 304	Stainless Steel AISI 316
Body Gasket	PTFE	PTFE
Ball Seat	R-PTFE (15%)	R-PTFE (15%)
Connection Type	Flanged	Flanged
Nominal Pressure (PN)	40 bar	40 bar
Max. Operating Temperature	-25/+180°C	-25/+180°C

**-FLANGED: DN15 all sizes available in between DN100**

## BRASS VALVES FOR WATER ► SK-120



Body Material	Brass Ms58
Ball Material	Ni Coated Brass
Gasket	EPDM
Hand Lever	St 37
Connection Type	Threaded
Nominal Pressure(PN)	16 bar
Max. Operating Temperature	120°C

**-THREADED: 1/2" all sizes available in between 2"**

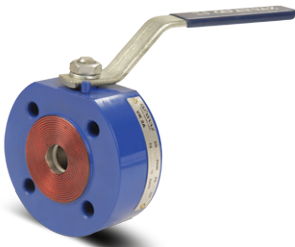
## MONOBLOCK VALVES FOR NATURAL GAS ► MBK-50



Body Material	Carbon Steel
Ball Material	Stainless Steel AISI 304
Ball Seat	PTFE
Gasket	NBR
Connection Type	Flanged
Nominal Pressure (PN)	40 bar
Max. Operating Temperature	-40/+60°C

-FLANGED: DN15 all sizes available in between DN100

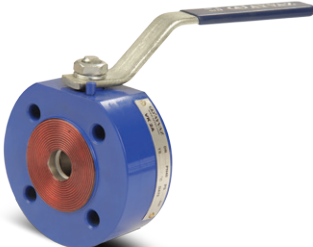
## MONOBLOCK VALVES FOR WATER ► MBK-40



Body Material	Carbon Steel
Ball Material	Stainless Steel AISI 304
Ball Seat	PTFE
Gasket	EPDM
Connection Type	Flanged
Nominal Pressure (PN)	40 bar
Max. Operating Temperature	-40/+110°C

-FLANGED: DN15 all sizes available in between DN100

## MONOBLOCK VALVES FOR LIQUIDS ► MBK-45



Body Material	Carbon Steel
Ball Material	Stainless Steel AISI 304
Ball Seat	PTFE
Gasket	EPDM
Connection Type	Flanged
Nominal Pressure (PN)	40 bar
Max. Operating Temperature	-40/+110°C

-FLANGED: DN15 all sizes available in between DN100

## FULL BORE BALL VALVE ► TGV-10



Body and Cover Material	Cast Iron GG-25
Ball Material	Stainless Steel
Ball Seat	R-PTFE (15%)
Gasket	PTFE
Connection Type	Flanged
Nominal Pressure (PN)	16 bar
Max. Operating Temperature	120°C

DN15 all sizes available in between DN200

## FULL BORE BALL VALVE ► TGV-20



Body and Cover Material	Cast Iron GG-25
Ball Material	Stainless Steel
Ball Seat	R-PTFE (15%)
Gasket	PTFE
Connection Type	Flanged
Nominal Pressure (PN)	6/10/16 bar
Max. Operating Temperature	120°C

DN40 all sizes available in between DN300

# VALVES

## WAFER TYPE BUTTERFLY VALVES ► KV-3



Body Material	Cast Iron GG-25
Liner Material	EPDM
Disc Material	Stainless Steel AISI 316
Shaft Material	Stainless Steel AISI 416
Connection Type	Flanged (Wafer Type)
Nominal Pressure (PN)	10/16 bar
Max. Operating Temperature	110°C

**DN25 all sizes available in between DN300 for PN16**  
**DN350 all sizes available in between DN600 for PN10 (comes with worm gear)**

## LUG TYPE BUTTERFLY VALVES ► KV-4



Body Material	Cast Iron GG-25
Liner Material	EPDM
Disc Material	Stainless Steel AISI 316
Shaft Material	Stainless Steel AISI 416
Connection Type	Flanged (Lug Type)
Nominal Pressure (PN)	10/16 bar
Max. Operating Temperature	110°C

**DN25 all sizes available in between DN300 for PN16**  
**DN350 all sizes available in between DN600 for PN10 (comes with worm gear)**

## WAFER TYPE BUTTERFLY VALVES ► KV-7



Body Material	Cast Iron GG-25
Liner Material	EPDM
Disc Material	Ni Coated Ductile Iron GGG 40.3
Shaft Material	Stainless Steel AISI 416
Connection Type	Flanged (Wafer Type)
Nominal Pressure (PN)	10/16 bar
Max. Operating Temperature	110°C

**DN25 all sizes available in between DN300 for PN16**  
**DN350 all sizes available in between DN600 for PN10 (comes with worm gear)**

## LUG TYPE BUTTERFLY VALVES ► KV-8



Body Material	Cast Iron GG-25
Liner Material	EPDM
Disc Material	Ni Coated Ductile Iron GGG 40.3
Shaft Material	Stainless Steel AISI 416
Connection Type	Flanged (Lug Type)
Nominal Pressure (PN)	10/16 bar
Max. Operating Temperature	110°C

**DN25 all sizes available in between DN300 for PN16**  
**DN350 all sizes available in between DN600 for PN10 (comes with worm gear)**

## WAFER TYPE BUTTERFLY VALVES FOR NATURAL GAS ► KV-9



Body Material	Ductile Iron GGG 40.3
Liner Material	NBR
Disc Material	Ni Coated Ductile Iron GGG 40.3
Shaft Material	Stainless Steel AISI 416
Connection Type	Flanged (Wafer Type)
Nominal Pressure (PN)	10/16 bar
Max. Operating Temperature	80°C

**DN25 all sizes available in between DN300 for PN16**  
**DN350 all sizes available in between DN600 for PN10 (comes with worm gear)**

## WAFER TYPE BUTTERFLY VALVES FOR NATURAL GAS ► KV-10



Body Material	Ductile Iron GGG 40.3
Liner Material	NBR
Disc Material	Ni Coated Ductile Iron GGG 40.3
Shaft Material	Stainless Steel AISI 416
Connection Type	Flanged (Lug Type)
Nominal Pressure (PN)	10/16 bar
Max. Operating Temperature	80°C

**DN25 all sizes available in between DN300 for PN16**  
**DN350 all sizes available in between DN600 for PN10 (comes with worm gear)**

## WAFER TYPE BUTTERFLY VALVES ► KV-1



Body Material	Cast Iron GG-25
Gasket Material	PTFE
Disc Material	Ni Coated Ductile Iron GGG 40.3
Shaft Material	Stainless Steel AISI 416
Connection Type	Flanged (Wafer Type)
Max. Operating Temperature	180°C

## WAFER TYPE BUTTERFLY VALVES ► KV-15



Body Material	Ductile Iron GGG 40.3
Gasket Material	EPDM
Disc Material	Aluminium Bronze
Shaft Material	Stainless Steel AISI 416
Connection Type	Flanged (Wafer Type)
Max. Operating Temperature	110°C

## LUG TYPE BUTTERFLY VALVES ► KV-16



Body Material	Ductile Iron GGG 40.3
Gasket Material	EPDM
Disc Material	Aluminium Bronze
Shaft Material	Stainless Steel AISI 416
Connection Type	Flanged (Wafer Type)
Max. Operating Temperature	110°C

## STRAINERS ► PTY-30



Body Material	Ductile Iron GGG 40
Gasket	Graphite+Acanthopore Plate
Strainer	Stainless Steel AISI 304
Filter	Stainless Steel AISI 304
Connection Type	Flanged
Nominal Pressure (PN)	16 bar      10 bar
Max. Operating Temperature	120°C      300°C

**DN15 all sizes available in between DN400**

## YS-600 BRASS STRAINER

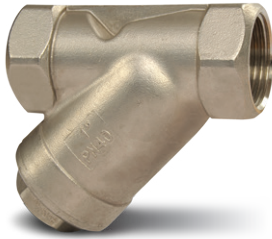


Body Material	Brass Ms58
Cover	Brass Ms58
Gasket	Klingerit
Filter	Stainless Steel AISI 304
Connection Type	Threaded
Nominal Pressure (PN)	16 bar
Max. Operating Temperature	110°C

**1/2" all sizes available in between 2"**

# VALVES

## YS-800 FOR LIQUIDS STRAINER



Body Material	Stainless Steel AISI 304	Stainless Steel AISI 316
Screen	Stainless Steel AISI 304	Stainless Steel AISI 316
Cap	Stainless Steel AISI 304	Stainless Steel AISI 316
Gasket	PTFE	PTFE
Connection Type	Threaded	Threaded
Nominal Pressure (PN)	40 bar	40 bar
Max. Operating Temperature	-25/+180°C	-25/+180°C

1/2" all sizes available in between 2"

## DYNAMIC BALANCE VALVES ► DBV-30



Body Material	Brass Ms58
Disc	Stainless Steel
Diaphragm	EPDM
Connection Type	Threaded
Nominal Pressure (PN)	16 bar
Max. Operating Temperature	120°C

1/2" all sizes available in between 2"

## ASPEN AEROGELS VALVE JACKETS



Fabric Material	Glass Fiber
Sewing Thread	Glass Fiber
Flange Ropes	Glass Fiber
Insulation Material	Pyrogel XT/XTF (0.021 W/mK) Cryogel X201 (0.015 W/mK)
Insulation Thickness	5mm-10mm (Optional)
Max. Operating Temp.	650 °C (Pyrogel XT/XTF)
Min. Operating Temp.	-270 °C (Cryogel X201)

DN15 all sizes available in between DN150

## AYVAZ STATIC BALANCE VALVES ► BVD-16



Body	Bronze
Cover	Brass
Disc	Brass
Disc Gasket	PTFE
Shaft	Brass
Gasket	EPDM
Connection Type	Threaded
Nominal Pressure (PN)	25 bar
Max. Operating Temperature	+120°C

1/2" all sizes available in between 2"

## AYVAZ STATIC BALANCE VALVES ► BVF-16



Body and Cover	Cast Iron GG-25
Disc Cover	Cast Iron GG-25
Shaft	Brass
Gasket	EPDM
Connection Type	Flanged (Flanges drilled according to EN 1092-2)
Nominal Pressure (PN)	16 bar
Max. Operating Temperature	+120°C

DN65 all sizes available in between DN300

## MANOMETER VALVES ► MV-330



Body and Cover	Brass
Shaft	Stainless Steel 1.4104
Valve	Stainless Steel 1.4104
Seat	Stainless Steel 1.4104
Connection Type	Threaded 1/2"
Nominal Pressure (PN)	25 bar
Max. Operating Temperature	200°C

## MANOMETER VALVES ► MV-416



Body and Cover	Brass
Shaft	Stainless Steel 1.4104
Valve	Stainless Steel 1.4104
Seat	Stainless Steel 1.4104
Connection Type	Threaded 1/2"
Nominal Pressure (PN)	25 bar
Max. Operating Temperature	200°C

## MANOMETER VALVES ► MV-417



Body and Cover	Brass
Shaft	Stainless Steel 1.4104
Valve and seat	Stainless Steel 1.4104
Sealing	PTFE
Connection Type	Threaded 1/2"
Nominal Pressure (PN)	25 bar
Max. Operating Temperature	200°C

## BRASS SAFETY VALVES ► SV-254



Body	Brass
Seat	EPDM
Connection Type	Threaded
Adjustable Pressure	1-10 bar
Max. Operating Pressure	16 bar
Max. Operating Temperature	130°C

1/2" all sizes available in between 2"

## PRESSURE REDUCING VALVE



Body	Ni Coated Brass
Gasket	EPDM
Connection Type	Threaded
Adjustable Pressure	0-6 bar
Nominal Pressure	16 bar
Max. Operating Temperature	90°C

1/2" all sizes available in between 2"

## BRASS GATE VALVE



Body	Brass
Seat	EPDM
Connection Type	Threaded
Max. Operating Pressure	16 bar
Max. Operating Temperature	120°C

1/2" all sizes available in between 2"

# VALVES

## BRONZE VALVES ► BRONZE GLOBE VALVE



Body	Bronze CC491K
Bonnet	Bronze CC491K
Stem	DZR Brass CW602N
Packing Nut	Brass CW617N
Packing	PTFE
Stem Bush	DZR Brass CW602N
Disc	Bronze CC491K
Connection Type	Threaded
Nominal Pressure (PN)	20 bar
Max. Operating Temperature	170°C

1/2" all sizes available in between 4"

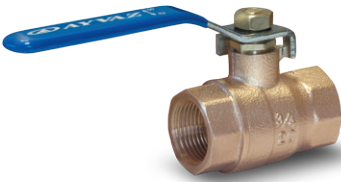
## BRONZE VALVES ► BRONZE GATE VALVE



Body	Bronze CC491K
Bonnet	Bronze CC491K
Stem	DZR Brass CW602N
Packing Nut	Brass CW614N
Packing	PTFE
Clamping Ring	Brass CW614N
Disc	Bronze CC491K
Connection Type	Threaded
Nominal Pressure (PN)	20 bar
Max. Operating Temperature	170°C

1/2" all sizes available in between 4"

## BRONZE VALVES ► BRONZE BALL VALVE



Body	Bronze CC491K
Seat Retainer	Bronze CC491K
Ball	Brass CW617N
Seat	PTFE
Stem	DZR Brass CW602N
Packing	PTFE
Gland Nut	Brass CW617N
Connection Type	Threaded
Nominal Pressure (PN)	20 bar
Max. Operating Temperature	170°C

1/2" all sizes available in between 2"

## BRONZE VALVES ► BRONZE CHECK VALVE



Body	Bronze CC491K
Cap	Bronze CC491K
Disc	Bronze CC491K
Hinge	Brass CW617N
Hinge Pin	Stainless Steel 2Cr13
Hinge Nut	Brass CW617N
Connection Type	Threaded
Nominal Pressure (PN)	20 bar
Max. Operating Temperature	170°C

1/2" all sizes available in between 2"

## BRONZE VALVES ► BRONZE STRAINER



Body	Bronze CC491K
Cap	Bronze CC491K
Screen	Stainless Steel AISI 304
Gasket	PTFE
Connection Type	Threaded
Nominal Pressure (PN)	20 bar
Max. Operating Temperature	170°C

1/2" all sizes available in between 2"

## BELLOW VALVES ► MK-16



Body	<b>A</b> Grey Cast Iron EN-GJL-250	<b>C</b> Nodular Cast Iron EN-GJS-400	<b>F</b> Cast Steel
Seal Ring	X12Cr13	X12Cr13	-
Disc	X12Cr13	X12Cr13	X20Cr13 1.4021
Bellow	X6CrNiMoTi-17-12-2	X6CrNiMoTi-17-12-2	X6CrNiTi-18-10
Connection	Flanged	Flanged	Flanged
Max. Temperature	300 °C	350 °C	400 °C
Max. Pressure	16 bar	25 bar	40 bar
Nominal Diameter	DN 15-250	DN 15-200	DN 15-150

Tests acc. EN - 12266 - 1

Flanges drilled according to EN 1092-2 for body material A, C

Flanges drilled according to EN 1092-1 for body material F

Face-to-face dimension according to EN 558-1 series 1

## BRONZE SAFETY VALVES ► L9-LB



Body	Cast Bronze
Seat	Forge Brass
Disc	Forge Brass
Spring	Steel
Sleeve	Brass
Operating Pressure	2.1-10 kgf/cm <sup>2</sup>
Operating Temperature	- 45 °C / 185 °C

1/2" all sizes available in between 2"

## STAINLESS STEEL SAFETY VALVES ► L9-LS



Body	Stainless Steel CF8
Seat	Stainless Steel 304 or CF8
Disc	Stainless Steel 304 or CF8
Spring	Stainless Steel 304
Sleeve	Stainless Steel 304
Operating Pressure	0,3-2 kgf/cm <sup>2</sup> - 2,1-10 kgf/cm <sup>2</sup> - 11-20 kgf/cm <sup>2</sup>
Operating Temperature	- 196 °C / 290 °C

1/2" - 3/4" Angled and straight types are available

## KNIFE GATE VALVE ► BV-16



O-Ring	EPDM
Sealing	Graphite
Stem	A182 F304
Sealing Ring	GGG-40
Seat Ring	EPDM
Knife	SS304
Body	GGG-40

DN50 all sizes available in between DN400

## WORM GEAR



Body Material	Epoxy coated Ductile Iron GGG 40.3
Diameters	DN40-600
Connection Type	Threaded ISO 5211
Max. Operating Temperature	-20/+70°C

## DOUBLE ACTING PNEUMATIC ACTUATOR



Body Material	Epoxy Coated Aluminium Injection
Pistons	Aluminium Cast
Shaft Material	Cadmium Coated Steel
Tightness Component	Nitrile Rubber
Valve Connection	Standard
Connection Type	Threaded ISO 5211
Max. Operating Temperature	-20/+80°C

## ELECTRIC ACTUATORS



Body	<b>UMA 3.5</b>	<b>UMC 10</b>	<b>Aluminium TYPE</b>
Cover	Plastic AA 66	Plastic AA 66	Aluminium
Axis	Plastic AA 66	Plastic AA 66	Steel
Connection	Chrome Steel	Chrome Steel	Bronze Alloy
Nominal Diameters	Threaded	Threaded	Threaded
Max. Operating Temp.	DN40-600	DN40-600	DN40-600
	-20/+70°C	-20/+70°C	-20/+70°C

1/2" all sizes available in between 2"

# VALVES



## HEAD OFFICE - FACTORY

Atatürk Sanayi Bölgesi Hadımköy Mahallesi Mustafa İnan Caddesi No: 44 Arnavutköy - İSTANBUL  
Tel: +90 212 771 01 45 (pbx) | Fax: +90 212 771 25 60

.....  
**Caserta/Italy** : **Moscow/Russia** : **Viernheim/Germany** : **Kiev/Ukraine** : **Warsaw/Poland**  
Tel: +39 0823 187 3988 : Tel: +74959951728 : Tel: +49 62046014399 : Tel: +380 44 390 57 57 : Tel: +48-32-783-295-1  
rmolaro@ayvaz.com : ayvazrus@ayvaz.com : germany@ayvaz.com : info@ayvaz.com.ua : tricorr@tricorr.eu

.....  
**Dubai/U.A.E** : **Xiamen/China** : **Kazakhstan** : **Ispirih/Bulgaria**  
Tel: +971 563550822 : Tel: +86 592-7018050 : Tel: +7 (701) 066 066 1 : Tel: +359 8431 27 32  
+971 501306871 : shanghai@ayvazchina.com : +90 (533) 760 34 66 : office@ayvaz-n.eu  
mideast@ayvaz.com : xiamen@ayvazchina.com : celyas@ayvaz.com :

info@ayvaz.com | www.ayvaz.com